

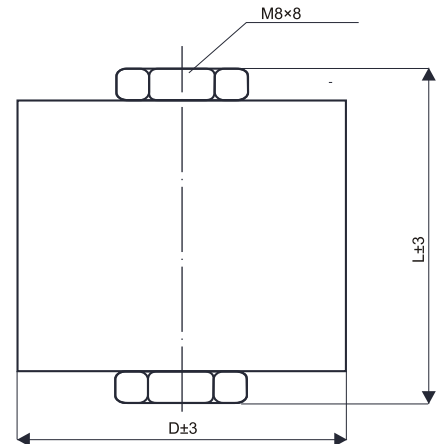
GTO SNUBBER CAPACITOR

Application:

Capacitor is used in pulse duty construction for GTO snubber circuits.

Technical data:

Capacitance tolerance $\pm 10\%$ optional $\pm 5\%$
 Operating temperature $-55^{\circ}\text{C} \div 85^{\circ}\text{C}$
 $\text{tg } \delta$ $3 \div 5 \times 10^{-4}$
 Expected life 100.000 h
 L self $< 20\text{nH}$



Cylindrical casing with axial screw and thread connections size M6 or M8.
 Maksimum torque 5 Nm.

Cn μF	I _{max} A	du/dt V/ μs	DxL mm	I _{max} A	du/dt V/ μs	DxL mm	I _{max} A	du/dt V/ μs	DxL mm
950VDC/450VAC			1200VDC/500VAC			1600VDC/550VAC			
0,22				15	250	35x49	15	280	35x60
0,47				20	250	40x49	20	300	35x60
1,0	15	260	35x60	20	260	55x49	25	300	50x60
2,0	25	260	35x60				30	300	65x60
3,0	25	280	45x60						
4,0	25	300	50x60						
5,0	25	300	55x60						
2000VDC/600VAC			3300VDC/1400VAC			4500VDC/1400VAC			
0,25				20	3000	50x55			
0,5				25	3000	65x55	15	3000	70x130
1,0	20	250	50x60				15	3000	90x130
2,0	25	250	65x60						
3,0									
4,0									
5,0									
6,0				160	1200	95x180			

Ltd
 99-300 Kutno; 1 Grunwaldzka St.
 Poland
 tel./fax: +48 24 253 60 71
 tel. +48 24 355 13 36
<http://www.mitra.com.pl>
 e-mail: mitra@mitra.com.pl